

1999 Honda







*d*ivers come in

all shapes and sizes.

Coincidentally, so do we.

The fact is, Honda is constantly adding to its already diverse lineup, nine bodystyles in all, to meet America's changing needs. This year is no exception. Exceptional is more like it. Inside you'll find news about the biggest Honda ever, the all-new, more powerful Odyssey. And, the return of a Civic Si with a 160-horsepower VTEC™ engine. However, some things will never change, like Honda's reputation for building vehicles that are reliable, fuel-efficient* and just plain fun to drive. With all Honda has to offer, you're bound to find a perfect fit.



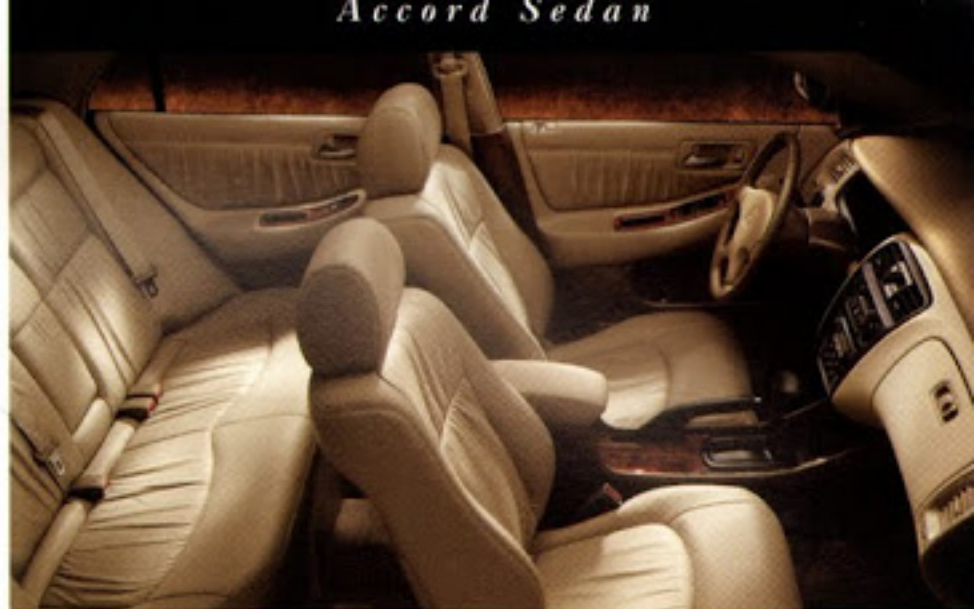
Accord EX V-6 Sedan shown in Heather Mist Metallic.



Take a seat. A truly comfortable one, thanks to a Driver's Seat with 8-Way Power Adjustment, standard on V-6 models and available on the EX.



Every Accord has two front Beverage Holders, while the LX and EX models also feature two more beverage holders conveniently placed in the rear armrest.



*t*he Accord Sedan is about quiet elegance. Seductive luxury. Effortless motion, or so it would seem. But underneath its refined exterior is a technologically advanced power plant. The Accord offers one of the most powerful V-6 engines in its class. There's also a 4-cylinder engine that meets California's strict Low-Emission Vehicle (LEV) standard and a 148-horsepower ULEV-rated† engine, which meets the ultra-low emission standard. And, with every Accord comes an inviting interior, comfortable and spacious enough to carry five adults. In style. Especially with the elegant leather-trimmed seats and wood-grain interior trim that adorn the EX V-6. Whether your priority is luxury, economy or ecology, the Accord is the car for you. After all, it was designed with you in mind.



Accord EX V-6 Coupe shown in San Marino Red.



*Activating your automatic garage door opener or home lights is as easy as a touch of the button on your Accord EX V-6 HomeLink® Remote System.***



Thoughtful amenities like Steering Wheel-Mounted Audio Controls on the EX V-6 allow you to keep your hands on the wheel while adjusting your stereo.

Accord Coupe



*i*t's hard not to like the sleek styling of the Accord Coupe.

It's as elegant as it is distinctive. Try a spirited 4-cylinder. Or a V-6 model, which houses one of the most powerful engines in its class. An incredible 200-horsepower VTEC engine so exhilarating to drive, you could easily be distracted from the host of amenities that could make your living room jealous. Then you realize how spacious the interior is. The comfortable seats contour to your body. While the quiet of the cabin lets you contemplate your next CD selection. Of course, the EX comes with a standard CD sound system. There are power controls, air conditioning and remote entry. With all its refinement, the Accord Coupe offers a thrilling driving experience. It's about style, power and performance. What's not to like?



Civic EX Sedan shown in Iced Teal Pearl.

Civic Sedan



Whether you're a sun worshiper or a stargazer, there's nothing you'll like more than a Power Moonroof with tilt option. And, it's standard on the EX.



You'll find the Control Panel on the Civic LX and EX located on the driver's side door, which allows you easy access to the power windows.



The Civic Sedan is a car you can count on. And count on. It's reliable, efficient and durable, so you can be carefree. But as responsible as it is, the high-performance, 127-horsepower VTEC engine in the EX is a thrill to command. It's quick, smooth and responsive. While the styling of the cabin is exceptionally comfortable. It's also remarkably quiet. There's plenty of room to carry whatever you need, including company. And to keep them cool, the LX and EX have standard air conditioning. Ergonomics are superior, with easy-to-read and easy-to-reach controls. Everything feels just right in a Civic. It's the kind of car you look forward to driving. Perhaps that's why it's one of America's most popular cars. Or maybe it's just because it's so much fun to drive. You decide.



Civic Si Coupe shown in Flamenco Black Pearl. Si availability begins February 1999.

Civic Coupe



The Remote Entry System (EX and Si) lets you lock and unlock doors up to 50 feet away. It can also be upgraded with an accessory security system.



Cruise Control on the EX and Si Coupe is located on the steering wheel. Which you'll appreciate on the long road trips you're bound to take in your new Civic.



*t*he Civic Coupe, with its long, sleek lines, offers the kind of distinctive styling that could please the most discriminating tastes. It's smart. It's sexy. It's powerful. Like the Civic Si, which boasts a very impressive 160-horsepower, DOHC VTEC engine that will satisfy the most demanding driver. Welcoming interiors are roomy, comfortable and have amenities like air conditioning and a power moonroof in the EX and Si. Instruments are so well-placed and easy to read, it's no wonder you can feel so relaxed in a Civic. Of course, that's until you step on the gas and your relaxed atmosphere is replaced with a sense of excitement. And, speaking of gas, the Civic name is synonymous with fuel efficiency,* as well as Honda quality. Take one for a ride. You'll never look back.



Civic DX Hatchback shown in Vogue Silver Metallic.



An electronically tuned High-Power Stereo with four speakers and a clock comes standard on the DX Hatchback. Perhaps it's time for some music?



Thirsty? Two Front Beverage Holders are standard equipment and easy to reach. One of which can hold a whopping 32-oz. beverage. Drink up.

Civic Hatchback



The Civic Hatchback has it all. Versatility, fuel efficiency and a serious sense of what a good time is truly about. Like a car that is fun to drive. Around town or cross-country, if the mood strikes you. The interior is spacious enough to bring along friends and everything else you need. The 50/50 split fold-down rear seatback gives you lots of extra space. While a removable cargo area cover, standard on the DX, keeps your valuables out of sight. The front seats recline, the steering column adjusts and there's a convenient coin box. Ergonomically speaking, the interior is perfectly planned. There's an easy-open hatch that makes loading things a breeze. Whether you're going for a long trip or short, there's no better way to get there than in a Civic Hatchback.*



Prelude Type SH shown in Crystal Blue Metallic.

Prelude



Let's get technical. The Active Torque Transfer System (ATTS) minimizes understeer and helps the Prelude Type SH track tight going through curves.



The Prelude's Sequential SportShift is modeled after the sequential shifter found in Honda-powered race cars.



a crisp-shifting 5-speed manual, 200-horsepower marvel of steel, alloy and aluminum. The Prelude offers the most thrilling ride you can have on four wheels without decals, sponsors and a racetrack. But even more amazing is the available Sequential SportShift.[™] It adds life to the ho-hum of automatic transmissions by turning them into full-shifting manuals at the stroke of a lever. Then there's the Prelude Type SH, one of the hottest-performing sports coupes in its class, which offers Honda's unique ATTS[™] for the kind of road-hugging control that will please even the most demanding driver. The Prelude's superb ergonomics and comfortable interior only add to the experience of driving what can truly be called a "driver's car." Ladies and gentlemen, start your engines.



Odyssey EX shown in Canyon Stone Silver Metallic. EX availability begins December 1998.



Everyone can keep cool with Adjustable Rear-Cabin Air-Conditioning Vents and help navigate with the individual map lights at all window seating positions.



The convenient Retractable Center Tray Table has four beverage holders. Two for the front passengers and two for the second-row passengers.



*t*he Odyssey has certainly grown up. In fact, it's the biggest Honda ever. Along with size, it's picked up some remarkable new traits. Like a 210-horsepower[†] V-6 engine. Dual sliding doors that are power-operated on the EX. Loading kids, packages, the dog, has never been easier. There are beverage holders galore. Storage compartments are just about everywhere and the seat configuration is, well, genius. The third-row Magic Seat[™] folds and retracts into the floor. No need to remove it or store it somewhere else. The second-row bucket seats can be turned into a bench seat or folded down to provide extra cargo space. You also have the option of removing them. Talk about versatility. Talk about Honda ingenuity. Talk about an Odyssey.



Odyssey EX interior shown in Quartz with accessory cassette player.



Dual sliding doors make coming and going so easy, and they're standard on the LX. On the EX, the doors are power-operated. They can be opened or closed, together or one at a time, from an instrument-panel control. Or by a keyless remote.



Buckets? Or bench? The option is yours. The second-row bucket seats can be quickly and easily converted into a two-passenger bench seat. The seats can also be removed when space is needed. For things like 4' x 8' sheets of plywood.



Piling your kids into your new Odyssey is easy and safe, because the power sliding doors have a safety rebound feature. If one of the doors should encounter resistance while closing, it will automatically reverse direction and open.



CR-V EX shown in Nighthawk Black Pearl with accessory roof rack.



Two conveniently located Power Outlets, one in front and one in the rear, let you plug in necessities like a 12-volt portable television set or refrigerated cooler.



The Rear Storage Well, located under the picnic table, can be used for wet and dry items. Or you can use it as an ice chest. Ingenious, isn't it?



*i*s there a vehicle more fun to drive than the CR-V? Well, let's see. You'd need to find a 4-wheel-drive sport-utility vehicle that's perfect for zipping around town, as well as those unpredictable back-country roads. One with so much space you can actually walk through the front seats to the rear seats. Of course, that's after you fold down the center tray table. Even if you're lucky enough to find one with these features, you can forget about finding one with Real Time™ 4WD, two 12-volt power outlets, a rear storage well that can be used as an enormous cooler and last, but certainly not least, a removable folding picnic table. Oh, did we mention there's also a 2WD version? The CR-V is a model of reliability and versatility. But most important of all, it's one of a kind. Just like you.



Passport AWD EX shown in Ebony Black.



You will really appreciate the Double Wishbone Front Suspension, coil-spring rear suspension and the eight inches of ground clearance when off-roading.



With Shift-on-the-Fly 4WD, there's no need to stop the Passport or the fun when you have to change from 2WD to 4WD and back again.

Passport



*i*n the mood to tackle a crowded city street or some country dirt road in the middle of nowhere? Take your pick, because the Passport is ready for just about anything. Its 205-horsepower engine makes it one of the most powerful V-6 vehicles in its class. Add shift-on-the-fly 4WD and it's not only powerful, it's practically unstoppable.

With all its handsome ruggedness, the Passport retains its style. Inside there's more than enough room for you and four friends to get comfortable. And a long list of luxurious amenities that come in handy wherever you're going. Like soft, supple leather-trimmed seats, available on the EX. So whether you feel like being above it all on a city street or knee-deep in mud (actually, tire-deep), your Passport is here.



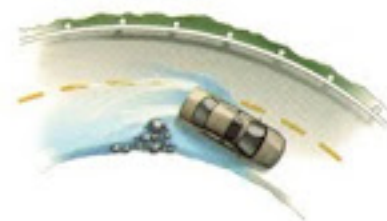
Accord EX Coupe shown in Taffeta White.

With your safety in mind



Front and Rear Crash Zones, dual airbags, 3-point seat belts and steel side-impact door beams help provide protection in the event of an impact.

Honda's Anti-Lock Braking System (ABS) helps the driver retain steering control when braking hard, especially on slippery surfaces.



Safety has always been an important element in the design of and technology built into Honda vehicles. As a result, every Honda car, truck and minivan is equipped with a long list of features that can help protect the driver and passengers in the event of an accident.

For example, every Honda vehicle has built-in front and rear crush zones which, in a severe impact, progressively fold to help absorb collision energy. Inside, primary protection for all occupants is provided by the seat belts, while dual front airbags[†] help provide supplemental protection for the driver and front passenger in moderate to severe frontal impacts. Sturdy steel door beams help absorb energy in a side impact

and help maintain the structural integrity of the cabin. And every Honda vehicle has energy-absorbing bumpers, front-seat head restraints, a collapsible steering column, padded instrument panel and interior surfaces and, on all 4-door models, child-proof rear door locks.

Safety can also be built into a vehicle by its ability to avoid an accident altogether. For this reason, Honda vehicles have responsive engines, powerful brakes and refined suspensions, all of which help allow for stable, controlled responses in an emergency driving situation. And, so you can see clearly, all our vehicles have excellent outward visibility and bright halogen headlights, which help light up the night road ahead.

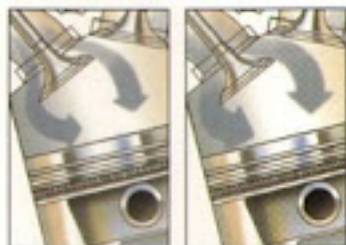
[†]Honda reminds you and your passengers to always buckle up.



3.0 VTEC



All Honda engines have 4 Valves Per Cylinder that are actuated by an overhead camshaft. This design allows more optimal placement of the four valves, which are used to flow more air and fuel. This increased flow fills the cylinder with a denser charge, which helps to create more power.



VTEC (Variable Valve-Timing and Lift Electronic Control), the system used on many Honda engines, switches between two different lobes on a special camshaft to provide correct timing for the air/fuel charge. At low rpm, this helps the engine provide more fuel efficiency; at higher rpm, more power.*



The sophisticated Double Wishbone Suspension found on most Honda models uses upper and lower links to precisely control the wheels and tires' up- and downward movement. This helps provide excellent handling by holding the tires more fully in contact with the road, yet also yields a supple, comfortable ride.

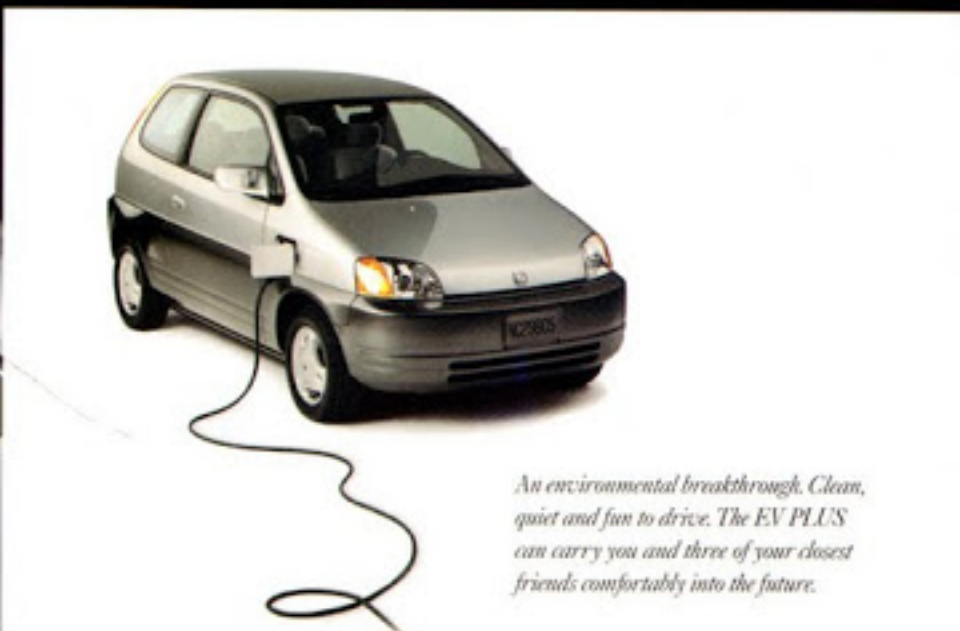


*t*he measure of any great automobile company is how well its technology is spread from top to bottom. At Honda, *every* engine we produce has the following—an aluminum-alloy block and cylinder head, 4 valves per cylinder, electronic ignition and sequential fuel injection.

What do these advanced engineering features do for you? It means your Honda will provide outstanding reliability, power, fuel efficiency* and durability. Great for driving across town, or for taking that cross-country road trip you've always dreamed about.

And to make your drives as responsible as possible, the majority of Honda cars are rated as LEVs, or Low-Emission Vehicles. Because a vehicle should be kind to you, your passengers *and* the environment.





An environmental breakthrough. Clean, quiet and fun to drive. The EV PLUS can carry you and three of your closest friends comfortably into the future.



Honda continues to lead the automotive industry with technological innovations like the first gasoline-powered vehicles to meet the Low-Emission Vehicle (LEV) and the more stringent Ultra-Low Emission Vehicle (ULEV) standards of California, the natural-gas-powered Civic GX, the cleanest internal combustion car in the world, and the EV PLUS, the first electric car with advanced battery technology.

Dedicating a company to the development and application of environmentally friendlier technology requires commitment. Having the foresight to know it can be done without sacrificing performance and fuel economy takes thinking. Honda thinking.

In 1996, the Civic CX, DX and LX became the first gasoline-powered vehicles to meet the California LEV standard. Then in 1998, we voluntarily made this technology available in all 50 states on most Accord and Civic models. This year, our low-emission vehicles sold nationwide include the Civic EX and the all-new Odyssey, which meets the LEV standard for light trucks. And, the ultra-low emission Accord[†] the cleanest-burning gasoline-powered production car in the U.S., meets California's ULEV standard. While these vehicles are some of the cleanest on the road today, they have achieved this status without compromising the things you've come to expect from Honda.

[†]Available in California and parts of the Northeast.



92

ACCORD EX

\$5

HONDA
CIR



Honda's reputation for quality is carried on by the nearly 1,000 Honda dealers nationwide. Visit one nearest you and see our full lineup of diverse vehicles.



Honda Care. Extra peace of mind. Freedom from high repair costs, plus 24-hour roadside assistance. A vehicle service contract written with you in mind. Ask your dealer for details.



*i*t has always been our philosophy to build vehicles of the highest quality that can offer superior fuel economy without sacrificing performance. And, to build them in the countries where they are sold. Today, Honda builds over 750,000 cars a year in North America.

However, our commitment to customer satisfaction extends even further. Right to your dealer's door. Where you'll be pleased to find knowledgeable people dedicated to giving you unsurpassed service.

Whether you want to own or lease a new Honda, your dealer is there for you. As is the American Honda Finance Corporation. They can assist you with finding just the right finance option to fit your needs. It is our goal to make owning a Honda as rewarding as driving one.



With every new Honda comes a reputation for quality. Dependability. And a 3-year/36,000-mile limited warranty.^{††} Which also covers the many Genuine Honda Accessories you can add to your new vehicle at the time of purchase. And, there's no one better to install them than Honda-trained technicians. Their knowledge, expertise and the fact they use Genuine Honda Parts make them ideal for routine maintenance. Why trust your Honda to anyone else?

For further information about our warranty and products, or to request a brochure for a specific model, call us at 1-800-33-HONDA. Or you can visit your local Honda dealer. Either way, be sure to check out our award-winning Web site at www.honda.com. We look forward to hearing from you. In more ways than one.



Accord V-6 Sedan [LX, EX]

specifications

3.0 Liter, 200-hp, 24-Valve VTEC™ V-6 Aluminum-Alloy Engine with PGM-FI Automatic Transmission: 4-Speed with Grade Logic Control System
Multi-Link 4-Wheel Double Wishbone Suspension
Stabilizer Bars, Front and Rear
4-Wheel Disc Brakes with Anti-Lock Braking System (ABS)
Variable-Assist Power Rack-and-Pinion Steering
15" Wheels with Full Covers [LX]
15" Alloy Wheels [EX]
All-Season Tires: P205/65 R15 92V

features

Power Moonroof with Tilt Feature [EX]
Leather-Trimmed Seats and Door Panel Inserts [EX]
Wood-Grain Interior Trim [EX]
Driver's Seat Adjustable Lumbar Support [EX]
Driver's Seat with 8-Way Power Adjustment
Air Conditioning [LX]/Automatic Climate Control [EX]
Power Door Locks and Windows with Auto-Down Driver's Window
Security System with Remote Entry [EX]
Immobilizer Theft-Deterrent System
HomeLink® Remote System** [EX]
AM/FM High-Power Stereo Cassette with 4 Speakers [LX]
AM/FM High-Power Stereo CD Player with 6 Speakers [EX]
Steering Wheel-Mounted Audio Controls [EX]
Driver's and Front Passenger's Airbags (SRS)
Cruise Control
Sunglass Holder and Map Lights
Beverage Holders, Front and Rear
Body-Colored Dual Power Mirrors
Driver's and Front Passenger's Illuminated Vanity Mirrors
Tachometer
Center Console Armrest with Storage Compartments

exterior/interior colors

Dark Emerald Pearl/Ivory [LX, EX]
Taffeta White/Ivory [LX, EX]
Black Current Pearl/Quartz [LX, EX]
Flamenco Black Pearl/Quartz [LX, EX]
Heather Mist Metallic/Ivory [LX, EX]

EPA mileage estimates* [city/hwy]

4-Speed AT 20/28

For complete specifications and features, see individual product brochures.



Accord Sedan [DX, LX, EX]

specifications

2.3 Liter, 135-hp, 16-Valve Aluminum-Alloy Engine with PGM-FI [DX]
2.3 Liter, 150-hp, 16-Valve VTEC Aluminum-Alloy Engine with PGM-FI [LX, EX]
Manual Transmission: 5-Speed, Available Automatic Transmission: 4-Speed with Grade Logic Control System
Multi-Link 4-Wheel Double Wishbone Suspension
Stabilizer Bars, Front and Rear [LX, EX]
4-Wheel Disc Brakes with Anti-Lock Braking System (ABS) [EX]
Available Anti-Lock Braking System (ABS) [LX w/AT]
Variable-Assist Power Rack-and-Pinion Steering
14" Wheels with Full Covers [DX]; 15" Wheels with Full Covers [LX]
15" Alloy Wheels [EX]
All-Season Tires: P195/70 R14 90S [DX]; P195/65 R15 89H [LX, EX]

features

Power Moonroof with Tilt Feature [EX]
Available Leather-Trimmed Seats and Door Panel Inserts [EX]
Wood-Grain Interior Trim [EX with Leather Trim]
Driver's Seat with Adj. Lumbar Support and Power Height Adjustment [EX]
Driver's Seat with 8-Way Power Adjustment [EX with Leather Trim]
Air Conditioning and Cruise Control [LX, EX]
Power Door Locks and Windows with Auto-Down Driver's Window [LX, EX]
Sunglass Holder and Map Lights [LX, EX]
Security System with Remote Entry [EX]
Immobilizer Theft-Deterrent System
AM/FM High-Power Stereo Cassette and 4 Speakers [LX]/2 Speakers [DX]
AM/FM High-Power Stereo CD Player and 6 Speakers [EX]
Driver's and Front Passenger's Airbags (SRS)
Beverage Holders, Front and Rear [LX, EX]/Front Only [DX]

exterior/interior colors

Deep Velvet Blue Pearl/Lapis [DX, EX]
Dark Emerald Pearl/Ivory [LX, EX]
Taffeta White/Ivory [DX, LX, EX]
• Black Current Pearl/Quartz [EX]
Satin Silver Metallic/Lapis [DX, LX]
Flamenco Black Pearl/Quartz [DX, LX, EX]
Raisin Pearl/Quartz [LX]
Heather Mist Metallic/Ivory [LX, EX]

EPA mileage estimates* [city/hwy]

5-Speed MT 25/31
4-Speed AT 22/29 [DX]; 23/30 [LX, EX]



Accord V-6 Coupe (LX, EX)

specifications

3.0 Liter, 200-hp, 24-Valve VTEC V-6 Aluminum-Alloy Engine with PGM-FI Automatic Transmission: 4-Speed with Grade Logic Control System
 Multi-Link 4-Wheel Double Wishbone Suspension
 Stabilizer Bars, Front and Rear
 4-Wheel Disc Brakes with Anti-Lock Braking System (ABS)
 Variable-Assist Power Rack-and-Pinion Steering
 15" Wheels with Full Covers (LX)
 16" Alloy Wheels (EX)
 All-Season Tires: P205/65 R15 92V (LX), P205/60 R16 91V (EX)

features

Power Moonroof with Tilt Feature (EX)
 Leather-Trimmed Seats and Door Panel Inserts (EX)
 Wood-Grain Interior Trim (EX)
 Driver's Seat Adjustable Lumbar Support (EX)
 Driver's Seat with 8-Way Power Adjustment
 Air Conditioning (LX)/Automatic Climate Control (EX)
 Power Door Locks and Windows with Auto-Down Driver's Window
 Security System with Remote Entry (EX)
 Immobilizer Theft-Deterrent System
 HomeLink® Remote System** (EX)
 AM/FM High-Power Stereo Cassette and 4 Speakers (LX)
 AM/FM High-Power Stereo CD Player and 6 Speakers (EX)
 Steering Wheel-Mounted Audio Controls (EX)
 Driver's and Front Passenger's Airbags (SRS)
 60/40 Split Fold-Down Rear Seatback with Lock
 Cruise Control
 Beverage Holders, Front and Rear
 Body-Colored Dual Power Mirrors
 Sunglass Holder and Map Lights
 Tachometer

exterior/interior colors

Dark Emerald Pearl/Ivory (LX, EX)
 Taffeta White/Ivory (LX, EX)
 Black Currant Pearl/Quartz (EX)
 Satin Silver Metallic/Charcoal (LX)
 Flamenco Black Pearl/Charcoal (LX, EX)
 San Marino Red/Ivory (LX, EX)

EPA mileage estimates* [city/hwy]

4-Speed AT 20/28



Accord Coupe (LX, EX)

specifications

2.3 Liter, 150-hp, 16-Valve VTEC Aluminum-Alloy Engine with PGM-FI Manual Transmission: 5-Speed; Available Automatic Transmission: 4-Speed with Grade Logic Control System
 Multi-Link 4-Wheel Double Wishbone Suspension
 Stabilizer Bars, Front and Rear
 4-Wheel Disc Brakes with Anti-Lock Braking System (ABS) (EX)
 Variable-Assist Power Rack-and-Pinion Steering
 15" Wheels with Full Covers (LX)
 15" Alloy Wheels (EX)
 All-Season Tires: P185/65 R15 89H

features

Power Moonroof with Tilt Feature (EX)
 Available Leather-Trimmed Seats and Door Panel Inserts (EX)
 Wood-Grain Interior Trim (EX with Leather Trim)
 Driver's Seat Adjustable Lumbar Support (EX)
 Driver's Seat with Power Height Adjustment (EX)
 Driver's Seat with 8-Way Power Adjustment (EX with Leather Trim)
 Air Conditioning and Cruise Control
 Power Door Locks and Windows with Auto-Down Driver's Window
 Security System with Remote Entry (EX)
 Immobilizer Theft-Deterrent System
 AM/FM High-Power Stereo Cassette and 4 Speakers (LX)
 AM/FM High-Power Stereo CD Player and 6 Speakers (EX)
 Driver's and Front Passenger's Airbags (SRS)
 60/40 Split Fold-Down Rear Seatback with Lock
 Beverage Holders, Front and Rear
 Body-Colored Dual Power Mirrors
 Sunglass Holder and Map Lights
 Tachometer

exterior/interior colors

Deep Velvet Blue Pearl/Ivory (LX)
 Dark Emerald Pearl/Ivory (EX)
 Taffeta White/Ivory (LX, EX)
 Black Currant Pearl/Quartz (LX, EX)
 Satin Silver Metallic/Charcoal (LX, EX)
 Flamenco Black Pearl/Charcoal (LX, EX)
 San Marino Red/Ivory (LX, EX)

EPA mileage estimates* [city/hwy]

5-Speed MT 25/31
 4-Speed AT 23/30



Civic Sedan (DX, LX, EX)

specifications

1.6 Liter, 106-hp, 16-Valve Aluminum-Alloy Engine with PGM-FI (DX, LX)
 1.6 Liter, 127-hp, 16-Valve VTEC Aluminum-Alloy Engine with PGM-FI (EX)
 Manual Transmission: 5-Speed; Available Automatic Transmission: 4-Speed with Grade Logic Control System
 Stabilizer Bar, Front (LX, EX)
 Power-Assisted Front Disc/Rear Drum Brakes
 Anti-Lock Braking System (ABS) (EX)
 Power Rack-and-Pinion Steering
 14" Wheels with Full Wheel Covers
 All-Season Tires: P185/65 R14 85S

features

Power Moonroof with Tilt Feature (EX)
 Power Windows with Auto-Down Driver's Window (LX, EX)
 Power Door Locks (LX, EX)
 Remote Entry System (EX)
 Air Conditioning (LX, EX)
 Driver's and Front Passenger's Airbags (SRS)
 AM/FM High-Power Stereo with Clock and 4 Speakers (DX, LX)
 AM/FM High-Power Stereo CD Player with Clock and 4 Speakers (EX)
 Beverage Holder, Front
 60/40 Split Fold-Down Rear Seatback with Lock
 Cruise Control (LX, EX)
 Dual Power Mirrors (LX)/Body-Colored (EX)
 Map Lights (EX)
 Front Center Armrest with Storage Compartment (LX, EX)
 Child-Proof Rear Door Locks
 Rear Window Defroster with Timer
 Adjustable Steering Column

exterior/interior colors

Iced Teal Pearl/Gray (DX, LX, EX)
 Clover Green Pearl/Beige (DX, LX, EX)
 Taffeta White/Gray (DX, LX, EX)
 Inzo Red Pearl/Gray (LX)
 Vogue Silver Metallic/Gray (DX, LX, EX)
 Flamenco Black Pearl/Gray (LX, EX)

EPA mileage estimates* [city/hwy]

5-Speed MT 32/37 (DX, LX), 29/35 (EX)
 4-Speed AT 28/35



Civic Coupe [DX, EX, EX, Si]

specifications

1.6 Liter, 106-hp, 16-Valve Aluminum-Alloy Engine with PGM-FI [DX]
 1.6 Liter, 115-hp, 16-Valve VTEC-E Aluminum-Alloy Engine with PGM-FI [HX]
 1.6 Liter, 127-hp, 16-Valve VTEC Aluminum-Alloy Engine with PGM-FI [EX]
 1.6 Liter, 160-hp, 16-Valve DOHC VTEC Aluminum-Alloy Engine with PGM-FI [Si]
 Manual Transmission: 5-Speed; Available Automatic Transmission: 4-Speed with Grade Logic Control System [DX, EX]
 Available Continuously Variable Transmission (CVT) [HX]
 Front Stabilizer Bar [HX, EX, Si]/Rear Stabilizer Bar [Si]
 Power-Assisted Front Disc/Rear Drum Brakes/4-Wheel Disc Brakes [Si]
 Available Anti-Lock Braking System (ABS) [EX w/AT]
 Power Rack-and-Pinion Steering
 14" Wheels with Full Wheel Covers [DX, EX]; 14" Alloy Wheels [HX]
 15" Machine-Finish Alloy Wheels [Si]
 All-Season Tires: P185/65 R14 85S [DX, EX, EX]; P185/55 R15 84V [Si]

features

Power Moonroof with Tilt Feature [EX, Si]
 Power Door Locks and Windows with Auto-Down Driver's Window [HX, EX, Si]
 Remote Entry System [EX, Si]
 Air Conditioning [EX, Si]
 Driver's and Front Passenger's Airbags (SRS)
 AM/FM High-Power Stereo with Clock and 4 Speakers [DX, HX]
 AM/FM High-Power Stereo CD Player with Clock and 6 Speakers [EX, Si]
 Cruise Control and Map Lights [EX, Si]
 Beverage Holders, Front and Rear
 60/40 Split Fold-Down Rear Seatback with Lock
 Dual Power Mirrors [HX]/Body-Colored [EX, Si]
 Front Center Armrest with Storage Compartment [HX, EX, Si]
 Adjustable Steering Column
 Tachometer

exterior/interior colors

Electron Blue Pearl/Dark Gray [Si]
 Clover Green Pearl/Gray [DX, EX]
 Taffeta White/Gray [DX, EX]
 Milano Red/Dark Gray [DX, HX, EX, Si]
 Vogue Silver Metallic/Dark Gray [DX, HX, EX]
 Flamenco Black Pearl/Dark Gray [DX, HX, EX, Si]

EPA mileage estimates* [city/hwy]

5-Speed MT 32/37 [DX]; 35/43 [HX]; 29/35 [EX]; 26/31 [Si]
 4-Speed AT 28/35 [DX]; CVT 34/38 [HX]; 28/35 [EX]



Civic Hatchback [CX, DX]

specifications

1.6 Liter, 106-hp, 16-Valve Aluminum-Alloy Engine with PGM-FI
 Manual Transmission: 5-Speed
 Available Automatic Transmission: 4-Speed with Grade Logic Control System
 Power-Assisted Front Disc/Rear Drum Brakes
 Power Rack-and-Pinion Steering [CX w/AT, DX]
 Styled Steel Wheels [CX]
 14" Wheels with Full Covers [DX]
 All-Season Tires: P185/65 R14 82S

features

AM/FM High-Power Stereo with Clock and 4 Speakers [DX]
 Air Conditioning (Accessory)
 Beverage Holder, Front
 Driver's and Front Passenger's Airbags (SRS)
 Impact-Absorbing Body-Colored Bumpers
 50/50 Split Fold-Down Rear Seatback
 Adjustable Steering Column
 Removable Cargo Area Cover [DX]
 Seatback Pocket [DX]
 Rear Roof-Line Spoiler [CX]
 Body-Colored Extended Rear Roof-Line Spoiler [DX]
 Body Side Moulding
 Remote Fuel Filler Door Release
 Green Tinted Glass
 Dual Manual Remote-Operated Mirrors
 Hatch-Open Indicator Light
 Headlights-On Reminder
 Low-Fuel Indicator Light [DX]
 Rear Window Wiper/Washer [DX]
 Rear Window Defroster with Timer
 Coin Box

exterior/interior colors

Dark Amethyst Pearl/Dark Gray [CX, DX]
 Vogue Silver Metallic/Dark Gray [CX, DX]
 Flamenco Black Pearl/Dark Gray [DX]
 Roma Red/Dark Gray [CX, DX]

EPA mileage estimates* [city/hwy]

5-Speed MT 32/37
 4-Speed AT 28/35



Prelude [Prelude, Type SH]

specifications

2.2 Liter, 16-Valve DOHC VTEC Aluminum-Alloy Engine with PGM-FI
 200 hp [MT]; 195 hp [AT]
 Manual Transmission: 5-Speed; Available Automatic Transmission: 4-Speed Sequential SportShift™ with Grade Logic Control System [N/A on Type SH]
 Active Torque Transfer System (ATTS™) [Type SH]
 4-Wheel Double Wishbone Suspension
 Stabilizer Bars, Front and Rear
 Power-Assisted 4-Wheel Disc Brakes with Anti-Lock Braking System (ABS)
 Variable-Assist Power Rack-and-Pinion Steering
 16" Alloy Wheels
 All-Season Tires: P205/50 R16 87V

features

Exterior Sliding Power Moonroof with Tilt Feature
 Immobilizer Theft-Deterrent System
 Power Door Locks and Windows with Auto-Down Driver's Window
 Remote Entry System
 Leather-Wrapped Steering Wheel
 Leather-Wrapped Shift Knob [Type SH]
 Air Conditioning
 Driver's and Front Passenger's Airbags (SRS)
 Rear Spoiler with Integral LED Stoplight [Type SH]
 AM/FM Stereo CD Player with Honda AFB Sound System and 6 Speakers
 Cruise Control and Map Lights
 Driver's Seat Height Adjustment
 Beverage Holders, Front and Rear
 Front Center Armrest with Storage Compartments
 Fold-Down Rear Seatback with Lock
 Adjustable Steering Column
 Body-Colored Dual Power Mirrors
 2-Speed/Variable Intermittent Windshield Wipers
 Tachometer

exterior/interior colors

Crystal Blue Metallic/Black [Prelude, Type SH]
 Ficus Green Pearl/Black [Prelude, Type SH]
 Milano Red/Black [Prelude, Type SH]
 Premium White Pearl/Black [Prelude, Type SH]
 Nighthawk Black Pearl/Black [Prelude, Type SH]

EPA mileage estimates* [city/hwy]

5-Speed MT 22/27 [Prelude, Type SH]
 4-Speed AT 21/26 [Prelude]

[Civic Si availability begins February 1999]

[Milano Red availability begins mid-December 1998]



Odyssey [LX, EX]

specifications

3.5 Liter, 210-hp,¹ 24-Valve VTEC Aluminum-Alloy Engine with PGM-FI
Automatic Transmission; 4-Speed with Grade Logic Control System
4-Wheel Independent Suspension
Stabilizer Bar, Front
Front Disc/Rear Drum Brakes with Anti-Lock Braking System (ABS)
Electronic Brake Distribution system (EBD)
Traction Control System (TCS) [EX]
Power Rack-and-Pinion Steering
15" Wheels with Full Covers [LX]
16" Alloy Wheels [EX]
All-Season Tires: P215/65 R16 96T M+S

features

Dual Sliding Doors [Power on EX]
Immobilizer Theft-Deterrent System
Power Windows with Auto-Down Driver's Window
Power Door and Tailgate Locks
Remote Entry System [EX]
Rear Privacy Glass
Air Conditioning, Front and Rear; Automatic Climate Control [EX]
Driver's and Front Passenger's Airbags (SRS)
AM/FM High-Power Stereo Cassette with 4 Speakers [LX]
AM/FM High-Power Stereo CD Player with 6 Speakers [EX]
Cruise Control
Driver's Seat with 8-Way Power Adjustment [EX]
Steering Wheel-Mounted Audio Controls [EX]
HomeLink® Remote System** [EX]
Retractable Center Tray Table with Sliding Extension
Beverage Holders and Map Lights, Front, Middle and Rear
Sunglass Holder
3-Point Seat Belts at all Seven Seating Positions
Convertible Second-Row Seats
Retractable Third-Row Magic Seat™
Tachometer

exterior/interior colors

Deep Velvet Blue Pearl/Quartz [LX, EX]
Granite Green Metallic/Fern [LX, EX]
Dark Emerald Pearl/Ivory [LX, EX]
Mesa Beige Metallic/Ivory [LX, EX]
Canyon Stone Silver Metallic/Quartz [LX, EX]

EPA mileage estimates* [city/hwy]

4-Speed AT 18/26

¹Availability begins December 1998.
**LX/S Ap with regular unleaded fuel.



CR-V [2WD LX, 4WD LX, 4WD EX]

specifications

2.0 Liter, 145-hp, 16-Valve DOHC Aluminum-Alloy Engine with PGM-FI
Manual Transmission; 5-Speed; Available Automatic Transmission; 4-Speed
with Grade Logic Control System [standard on 2WD LX]
Real Time™ 4-Wheel Drive
4-Wheel Double Wishbone Suspension
Stabilizer Bars, Front and Rear
Power-Assisted Front Disc/Rear Drum Brakes
Anti-Lock Braking System (ABS) [EX]
Variable-Assist Power Rack-and-Pinion Steering
15" Styled Steel Wheels
15" Alloy Wheels [EX]
All-Season Tires: P205/70 R15 95S

features

Power Windows, Door Locks and Mirrors
Remote Entry System [EX]
Air Conditioning with Micron Air-Filtration System
AM/FM Stereo Cassette [LX]; AM/FM Stereo CD Player [EX]
Driver's and Front Passenger's Airbags (SRS)
Driver's Seat with Height Adjustment
Retractable Center Tray Table with Beverage Holders
Cruise Control and Map Lights
Reclining Seatbacks, Front and Rear
50/50 Split Fold-Down Rear Seatback with Center Armrests
Removable Folding Picnic Table
Tachometer
Two-Way Rear Tailgate/Glass Hatch Combination
Exterior Spare Tire Carrier with Tire Cover
Remote Glass Hatch Release
Adjustable Steering Column
Door-Pocket Storage Bins
12-Volt Accessory Power Outlets, Front and Rear

exterior/interior colors

Supermarine Blue Pearl/Dark Gray [LX, EX]
Clover Green Pearl/Dark Gray [LX, EX]
Sebring Silver Metallic/Dark Gray [LX, EX]
Milano Red/Dark Gray [LX, EX]
Taffeta White/Dark Gray [LX, EX]
Nighthawk Black Pearl/Dark Gray [LX, EX]

EPA mileage estimates* [city/hwy]

5-Speed MT (TBD, see your dealer)
4-Speed AT (TBD, see your dealer)

¹CR-V availability begins December 1998.



Passport [2WD LX, 4WD LX, 2WD EX, 4WD EX]

specifications

3.2 Liter, 205-hp, 24-Valve V-6 Engine with Multi-Point Fuel Injection
Manual Transmission; 5-Speed; Avail. Automatic Transmission [LX]
Standard 4-Speed Automatic Transmission [EX]
Shift-on-the-Fly 4-Wheel Drive [4WD LX, 4WD EX]
Limited-Slip Differential [4WD LX; 4WD EX]
Double Wishbone Front Suspension; Coil-Spring Rear Suspension
Stabilizer Bars, Front and Rear
4-Wheel Disc Brakes [4WD LX, 4WD EX]
4-Wheel Anti-Lock Braking System (ABS)
Variable-Assist Power Rack-and-Pinion Steering
15" Styled Steel Wheels [2WD LX]; 15" Alloy Wheels [4WD LX]
16" Alloy Wheels [4WD LX; EX]
Ground Clearance: 19" [LX]; 8.2" [4WD LX; EX]

features

Power Moonroof with Tilt Feature [EX]
Power Windows, Door and Tailgate Locks
Security System with Remote Entry [EX]
Air Conditioning and Cruise Control
AM/FM Stereo Cassette with 6 Speakers
Driver's and Front Passenger's Airbags (SRS)
Available Leather-Trimmed Seats and Door Panel Inserts [EX]
Wood-Grain Interior Trim [EX]
Leather-Wrapped Steering Wheel [EX]
60/40 Split Fold-Down Rear Seatback
Roof Rack
Beverage Holders, Front and Rear
Heated Dual Power Mirrors [Body-Colored on EX]
Center Console with Storage Compartment
Fog Lights and Rear Privacy Glass [EX]
Tachometer
Map Lights [EX]
Cargo Net and Retractable Cargo Cover

exterior/interior colors

Huntsman Green Mica/Gray [EX]
Cream White/Gray [LX, EX]
Bright Silver Metallic/Gray [LX, EX]
Palazzo Red Mica/Gray [LX]
Ebony Black/Gray [LX, EX]

EPA mileage estimates* [city/hwy]

5-Speed MT 18/20
4-Speed AT 16/20

¹With available 16" Wheel Package.



HONDA

www.honda.com 1-800-33-HONDA

*Mileage figures shown for comparison only. Actual mileage may vary. **EV rental @ 149 hp/148 B-ft, only available w/ST. (Available in California and parts of the Northeast.) **Honeywell® is a registered trademark of Prince Corporation, a wholly owned subsidiary of Johnson Controls.
†13-Year/36,000-Mile Limited Warranty: Ordinary maintenance items or adjustments, parts subject to normal wear and replacement, and certain items are excluded. See your Honda dealer for the terms and conditions of this limited warranty. Always use seat belts and child restraints. Children are safest in the rear seat. Specifications, features, illustrations and equipment shown in this brochure are based upon the latest available information at the time of printing. Although descriptions are believed correct, accuracy cannot be guaranteed. American Honda Motor Co., Inc., reserves the right to make changes at any time, without notice or obligation, in colors, features, specifications, accessories, materials and models. Some features shown may not be available on all models. California version differs slightly due to emission standards. Some vehicles are shown with optional equipment. Available-Optional. Honda EV PLUS™ is a trademark of Honda Motor Co., Ltd. "Real Time" is a trademark of Honda Motor Co., Ltd. The Passport is manufactured for Honda by Isuzu at the SIA factory in Lafayette, Indiana. Printed in U.S.A. on recycled paper. ♻️
©1998 American Honda Motor Co., Inc. 9898 Z0908